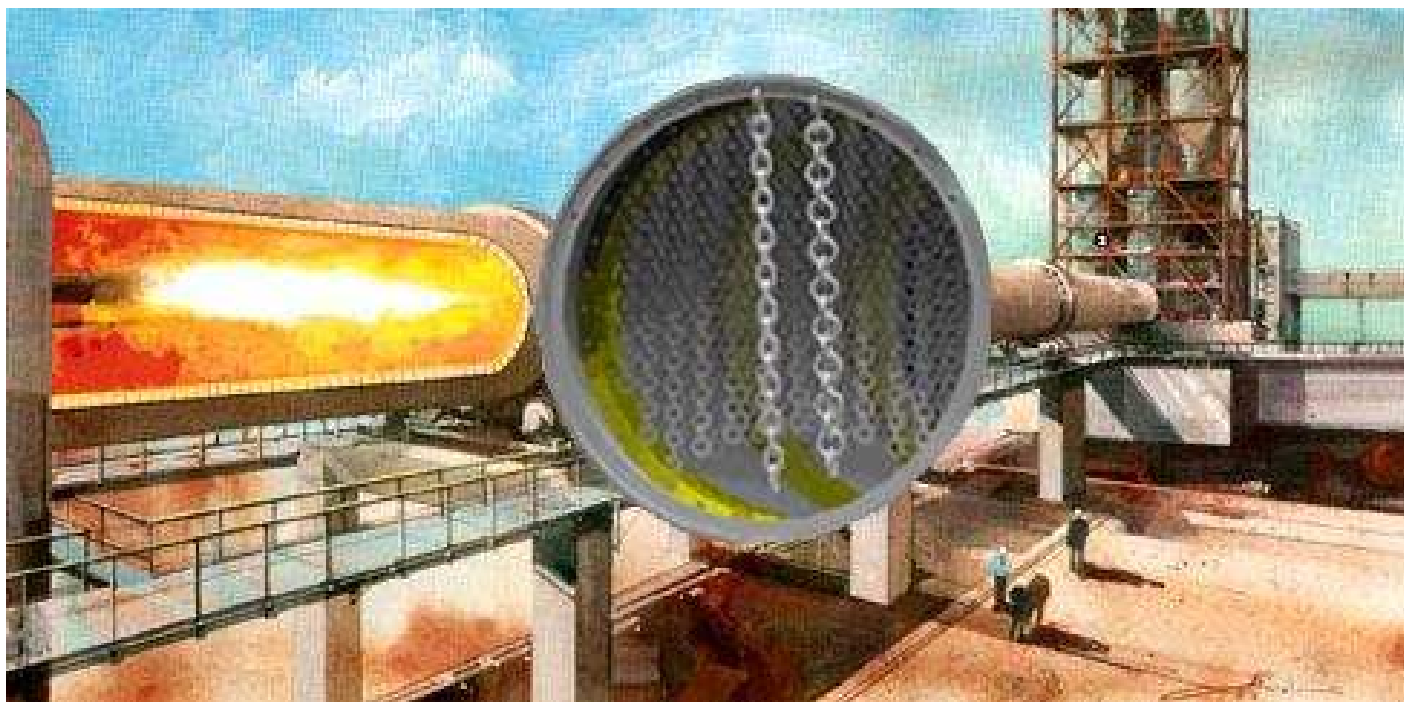


DAVAINÉ

ROTARY KILN CHAINS



DAVAINÉ

**DAVAINÉ
CHAINES**



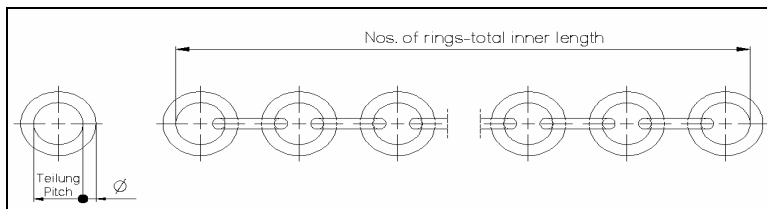
230 Avenue DESANDROUINS
59300 VALENCIENNES FRANCE
Web site : www.davaine.com

DAVAINÉ

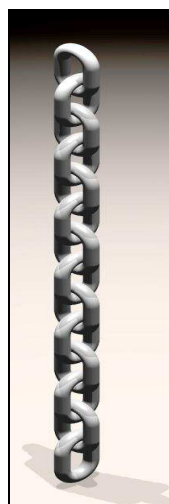
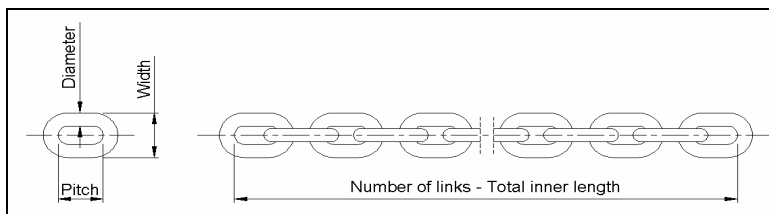
TÉL. : +33 (0)3 27 19 32 60
FAX : +33 (0)3 27 19 32 61
contact@davaine.com

DAVAINÉ

ROTARY KILN CHAINS



Diameter Diámetro		Pitch Paso		Weight / Ring Peso / Anillo		Weight Peso		Surface area per Unit length Area superficial por unidad de longitud	
mm	inch	mm	inch	Kg	lbs	Kg per m	lbs per 100 ft	cm2/m	ft2/ft
19	3/4	70	2 3/4	0.63	1.39	9.00	605	2384	0.782
19	3/4	76	3	0.67	1.48	8.82	592	2344	0.769
20	3/4	70	2 3/4	0.70	1.54	10.00	672	2538	0.833
20	3/4	76	3	0.75	1.65	9.90	665	2493	0.818
20	3/4	80	3 1/8	0.78	1.72	9.75	655	2467	0.810
20	3/4	100	4	0.93	2.05	9.30	625	2369	0.777
22	7/8	76	3	0.93	2.05	12.24	822	2800	0.919
22	7/8	80	3 1/8	0.97	2.14	12.13	815	2768	0.908
22	7/8	100	4	1.14	2.51	11.40	766	2649	0.869
23	7/8	80	3 1/8	1.07	2.36	13.38	899	2923	0.959
25	1	80	3 1/8	1.30	2.87	16.25	1092	3238	1.062
25	1	100	4	1.52	3.35	15.20	1021	3084	1.012
28	1 1/8	100	4	1.95	4.30	19.50	1310	3537	1.161

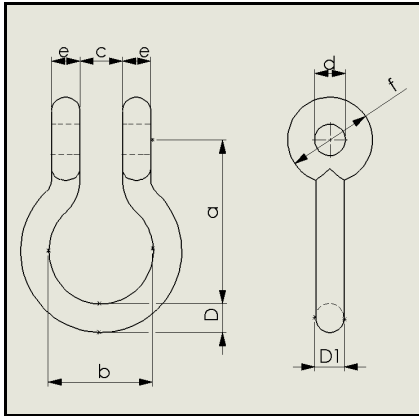


Diameter		Pitch		outside width		Weight/Ring		Weight		Surface area per unit length	
Diámetro		Paso		ancho exterior		Peso/Anillo		Peso		Area superficial per unidad de longitud	
mm	inch	mm	inch	mm	inch	kg	lbs	kg per m	lbs /100 ft	cm ² /m	ft ² /ft
16	5/8	56	2 13/64	54	2 1/8	0.292	0.644	5.20	350	1682	0.522
18	5/8	63	2 15/32	60	2 3/8	0.410	0.914	6.50	440	1884	0.618
20	3/4	70	2 3/4	67	2 5/8	0.573	1.263	8.20	549	2097	0.688
23	7/8	80	3 1/8	77	3 1/32	0.864	1.905	10.80	728	2417	0.793
26	1	91	3 19/32	89	3 1/2	1.273	2.806	14.00	941	2725	0.894
28	1 1/8	98	3 7/8	101	4	1.617	3.565	16.50	1109	3010	0.988
30	1 3/16	105	4 5/32	106	4 5/32	1.995	4.400	19.00	1277	3202	1.051

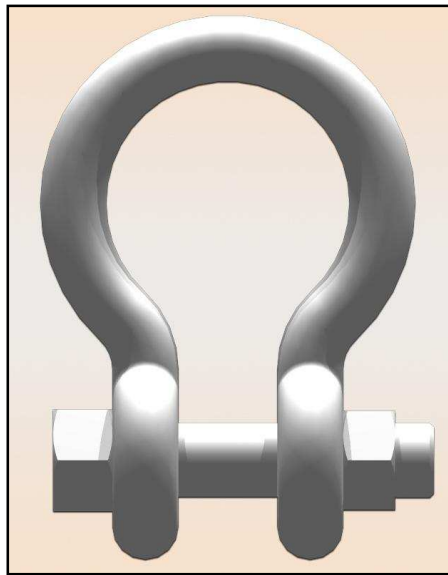
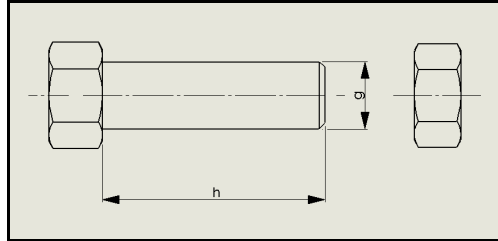
Davaines Chains is able to answer at particular needs

ROTARY KILN CHAINS

DAVAINE



DAVAINE



DAVAINE

Diameter														Bolts and nuts		length of thread	Complete	world plan pin	Drawing			
Diameter														Torrillos y		longitud de	Completa	las pernos sin	Dibujo			
D		D1		a		b		c		d		e		f		tusrcas		rosca		rosca		
mm	Inch	mm	Inch	mm	Inch	mm	Inch	mm	Inch	mm	Inch	mm	Inch	mm	Inch	g	h	mm		kg	mm	
19	3/4	19	3/4	95	3 3/4	50	2	34	1 11/22	22	2/25	14	9/16	45	1 3/4	M 20 X 90		30		1,10	20X50	1782
22	7/8	22	7/8	100	4	55	2 3/12	36.5	1 7/16	26	1	16	5/8	52	2 1/16	M 24 X 100		35		1,60	24X90	947
25	1	25	1	100	4	58	2 3/16	38	1 1/2	29	1 3/12	18	23/32	59	2 13/16	M 27 X 105		35		2,25	27X95	950
25	1	20	3/4	100	4	60	3	26	1	26	1	20	3/4	50	2	M 24 X 100		35		2,00	24X90	3123

Davaines Chains is able to answer at particular needs

230, AVENUE DESANDROUINS
59300 VALENCIENNES - FRANCE
Web site: www.davaine.com

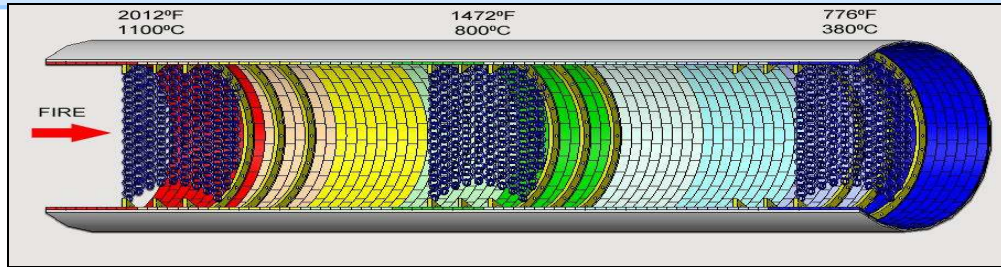


TÉL. : +33 (0)3 27 19 32 60
FAX : +33 (0)3 27 19 32 61
contact@davaine.com

DAVAINE

ROTARY KILN CHAINS

DAVAINÉ



Din Standard-Material number	Din Standard	US Standard AISI	Chemical Composition								Scale resisting up to (gas temperature)		Recommended temperature range (gas temperature)		Sigma phase brittleness	Suitable for sulphur containing gases
Norma DIN Numero Matetrial	Norma DIN alemana	Norma EEUU AISI	Composicion Quimica								Resistente a la formación de cascarilla hasta (temperatura gas)		Escala de temperatura recomendada (Temperatura gas)		Fase sigma fragilidad	Adecuado con gases contenido azufre
			C	Si	Mn	P	S	Cr	Ni	Al	°C	°F	°C	°F		
Carbon steels / Acerosal carbon																
1.0035	St. 33	C 1008	≤ 0,30	≤ 0,30	0,20- 0,50	0,06	0,05				500	932	≤ 500	≤ 932	no	•
1.0207	St. 35-2	C 1010	0,06- 0,14	traces	0,40- 0,60	0,035	0,035				500	932	≤ 500	≤ 932	no	•
1.0402	C 22	C 1020	0,17- 0,24	≤ 0,40	0,40- 0,70	0,045	0,045	≤ 0,40			500	932	≤ 500	≤ 932	no	•
1.047	21 Mn4Al	C 1022	0,18- 0,24	≤ 0,25	0,80- 1,10	0,035	0,035			0,02-0,05	500	932	≤ 500	≤ 932	no	•
1.0495	21 Mn5	C 1022	0,18- 0,24	≤ 0,25	1,10- 1,60	0,035	0,035			0,02-0,05	500	932	≤ 500	≤ 932	no	•
1.057	St. 52.3	C 1024	≤ 0,20	≤ 0,55	≤ 1,60	0,035	0,035				500	932	≤ 500	≤ 932	no	•
1.0501	C35	C 1035	0,32- 0,39	≤ 0,40	0,50- 0,80	0,045	0,045	≤ 0,04			500	932	≤ 500	≤ 932	no	•
Alloy steels / Aceros aleados																
1.7225	42 Cr Mo 4	SAE 4140	0,38- 0,45	≤ 0,40	0,60- 0,90	0,035	0,035	0,90- 1,20			550	1022	≤ 550	≤ 1022	no	•
1.6523	21 Ni Cr Mo2	SAE 8620	0,17- 0,23	≤ 0,25	0,60- 0,90	0,02	0,02	0,35- 0,65	0,40- 0,70		550	1022	≤ 550	≤ 1022	no	•
Ferritic steels / Aceros ferriticos																
1.4713	X 10Cr Al7 (8F)	8 F	≤ 0,12	0,50- 1,00	≤ 1,00	0,04	0,03	6,00- 8,00		0,50-1,00	850	1562	500-800	932-1472	no	•
1.4724	X 10Cr Al13 (9F)	9 F	≤ 0,12	0,70- 1,40	≤ 1,00	0,04	0,03	12,00-14,00		0,70-1,20	950	1742	500-900	932-1652	no	•
1.4742	X 10Cr Al18 (10F)	10 F	≤ 0,12	0,70- 1,40	≤ 1,00	0,04	0,03	17,00-19,00		0,70-1,20	1100	2012	800-1050	1472-1922	≤ 800°C	•
Austenitic steels / Aceros austeniticos																
1.4301	X 5 Cr Ni 18 10	304	≤ 0,07	≤ 1,00	≤ 2,00	0,045	0,03	17,00-19,50	8,50-10,50		850	1562	500-850	932-1562	no	•
1.4821	X 20 Cr Ni Si 254	329	0,10- 0,20	≤ 0,80- 1,50	≤ 2,00	0,04	0,03	24,00-27,00	3,50- 5,50		1100	2012	800-1100	1472-2012	no	•
1.4828	X 15 Cr Ni Si 20 12	309	≤ 0,20	≤ 1,50- 2,50	≤ 2,00	0,045	0,03	19,00-21,00	11,00-13,00		1050	1922	800-1050	1472-1922	no	•
1.4841	X 15 Cr Ni Si 25 20	310	≤ 0,20	≤ 1,50- 2,50	≤ 2,00	0,045	0,03	24,00-26,00	19,00-22,00		1200	2192	850-1200	1562-2192	no	•
1.4541	X 6 Cr ni Ti 18 10	321	≤ 0,08	≤ 1,00	≤ 2,00	0,045	0,03	17,00-19,00	9,00-12,00		850	1562	500-850	932-1562	no	•
Austenitic manganese steels / Aceros manganese austeniticos																
1.4872-85 MA	Novotherm 85 MA (14872-92)		0,20- 0,30	≤ 1,00	7,00- 9,00	0,045	0,03	16,00-18,00	3,50- 4,50		850	1562	500-850	932-1562	no	•
1.4872-108 MA	Novotherm 105 MA (14872)		0,20- 0,30	≤ 1,00	8,00-10,00	0,045	0,03	19,00-21,00	4,00- 5,00		1000	2012	700-950	1292-1742	≤ 650°C	•
1.4872-100 MA	Novotherm 100 MA (14872)		0,20- 0,30	≤ 1,00	8,00-10,00	0,045	0,03	23,00-24,00	4,00- 5,00		1100	2012	800-1050	1472-1922	≤ 700°C	•
1.4872-115 MA	Novotherm 115 MA (14872-91)		0,20- 0,30	≤ 1,00	8,00-10,00	0,045	0,03	24,00-26,00	5,00- 7,00		1200	2192	850-1200	1562-2192	≤ 750°C	•

230, AVENUE DESANDROUINS
59300 VALENCIENNES - FRANCE
Web site: www.davaine.com

DAVAINÉ CHAINES

TÉL. : +33 (0)3 27 19 32 60
FAX : +33 (0)3 27 19 32 61
contact@davaine.com